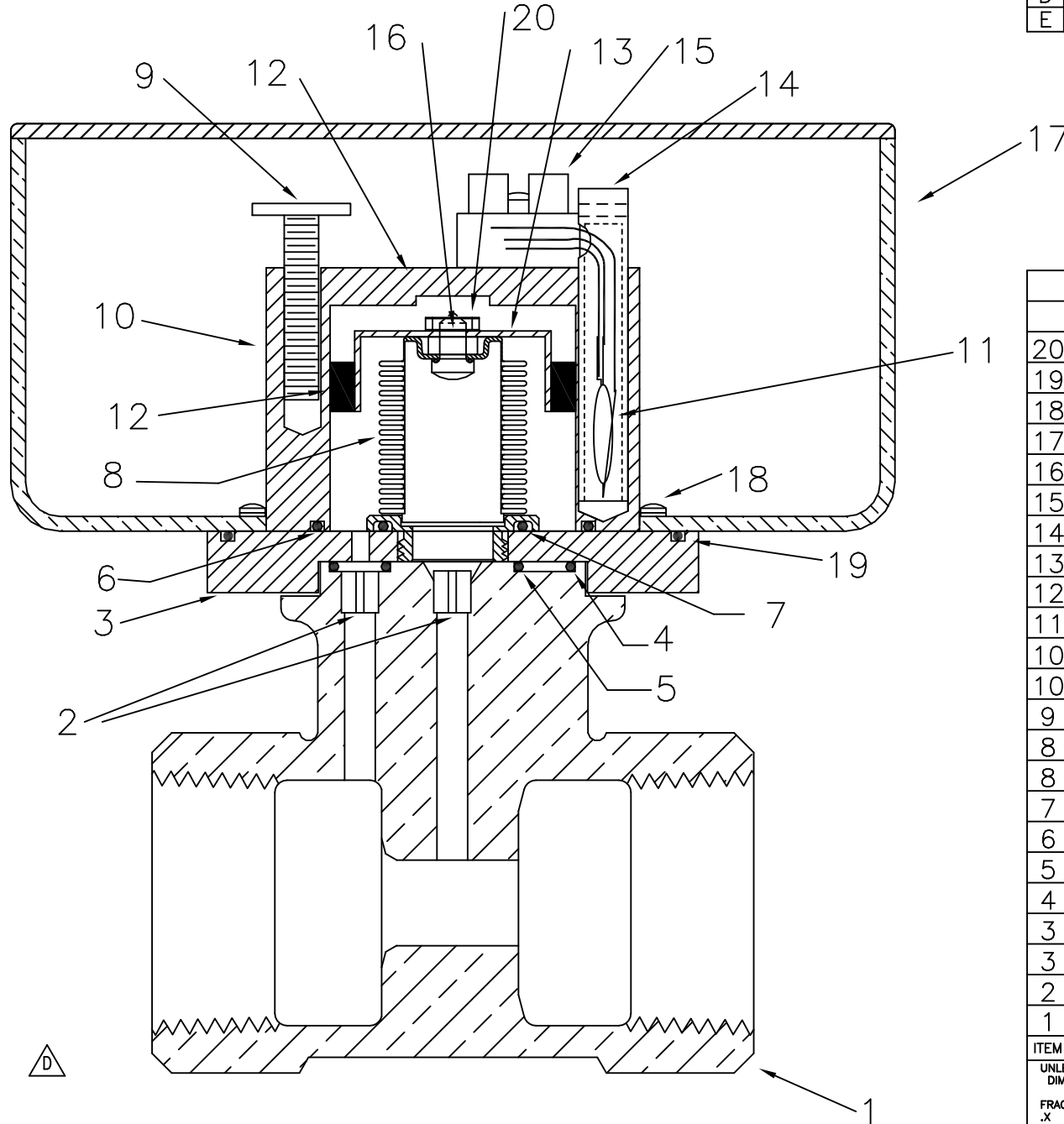


LTR	DATE	BY	CHECK	REVISIONS
A	06/04/04			INITIAL DESIGN
B	01/08/07			REDESIGN
C	03/18/08			ADD SST & BRASS
D	08/10/11			CHANGE #6943 6945, DELETE #6924
E	2/22/12			MODIFY ADAPTER BLK



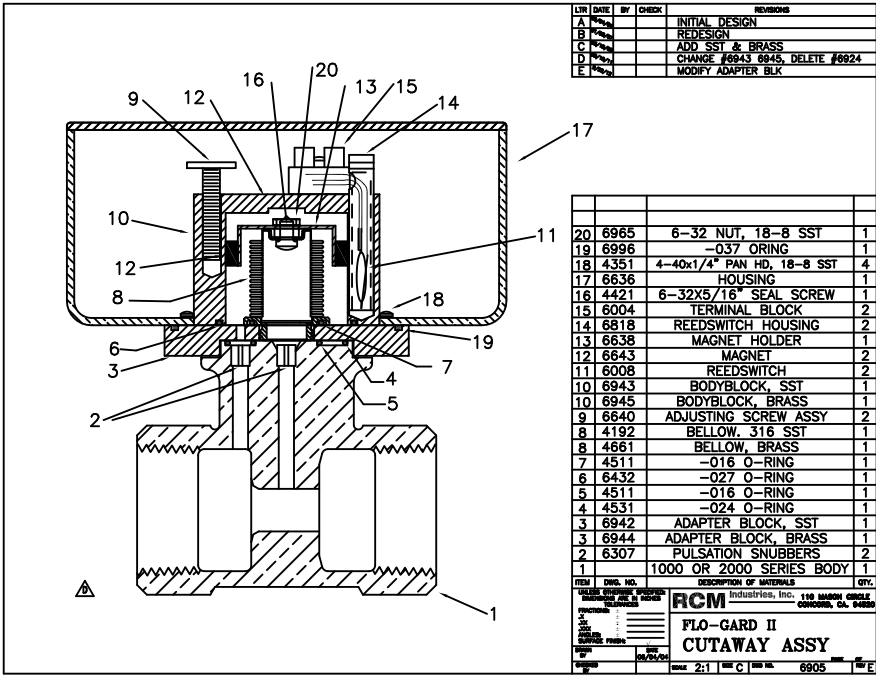
20	6965	6-32 NUT, 18-8 SST	1
19	6996	-037 ORING	1
18	4351	4-40x1/4" PAN HD, 18-8 SST	4
17	6636	HOUSING	1
16	4421	6-32X5/16" SEAL SCREW	1
15	6004	TERMINAL BLOCK	2
14	6818	REEDSWITCH HOUSING	2
13	6638	MAGNET HOLDER	1
12	6643	MAGNET	2
11	6008	REEDSWITCH	2
10	6943	BODYBLOCK, SST	1
10	6945	BODYBLOCK, BRASS	1
9	6640	ADJUSTING SCREW ASSY	2
8	4192	BELLOW. 316 SST	1
8	4661	BELLOW, BRASS	1
7	4511	-016 O-RING	1
6	6432	-027 O-RING	1
5	4511	-016 O-RING	1
4	4531	-024 O-RING	1
3	6942	ADAPTER BLOCK, SST	1
3	6944	ADAPTER BLOCK, BRASS	1
2	6307	PULSATION SNUBBERS	2
1		1000 OR 2000 SERIES BODY	1

ITEM	DWG. NO.	DESCRIPTION OF MATERIALS	QTY.
UNLESS OTHERWISE SPECIFIED: DIMENSIONS ARE IN INCHES TOLERANCES			
FRACTIONS: ± _____			
.X ± _____			
.XX ± _____			
.XXX ± _____			
ANGLES: ± _____			
SURFACE FINISH: _____			
DRAWN BY		DATE	
		06/04/04	
CHECKED BY		SCALE	PAGE OF
		2:1	REV E

**RCM Industries, Inc.** 110 MASON CIRCLE  
CONCORD, CA. 94520

## FLO-GARD II CUTAWAY ASSY

SCALE 2:1 SIZE C DWG NO. 6905



REV	DATE	BY	CHECK	REVISIONS
A				INITIAL DESIGN
B				REDESIGN
C				ADD SST & BRASS
D				CHANGE #6943 #6945, DELETE #6624
E				MODIFY ADAPTER BLK

ITEM	QTY	DESCRIPTION OF MATERIALS
20	1	6-32 NUT, 18-8 SST
19	1	-037 ORING
18	4	4-40x1/4" PAN HD, 18-8 SST
17	1	HOUSING
16	1	6-32x5/16" SEAL SCREW
15	2	TERMINAL BLOCK
14	2	REEDSWITCH HOUSING
13	1	MAGNET HOLDER
12	2	MAGNET
11	2	REEDSWITCH
10	1	BODYBLOCK, SST
10	1	BODYBLOCK, BRASS
9	2	ADJUSTING SCREW ASSY
8	1	BELLOW, 316 SST
8	1	BELLOW, BRASS
7	1	-016 O-RING
6	1	-027 O-RING
5	1	-016 O-RING
4	1	-024 O-RING
3	1	ADAPTER BLOCK, SST
3	1	ADAPTER BLOCK, BRASS
2	2	PULSATION SNUBBERS
1	1	1000 OR 2000 SERIES BODY

RCM Industries, Inc. 116 MARSH CIRCLE  
 CORONA, CA. 92626  
**FLO-GARD II**  
**CUTAWAY ASSY**  
 DATE: 2-1 1980 BY: C 6905