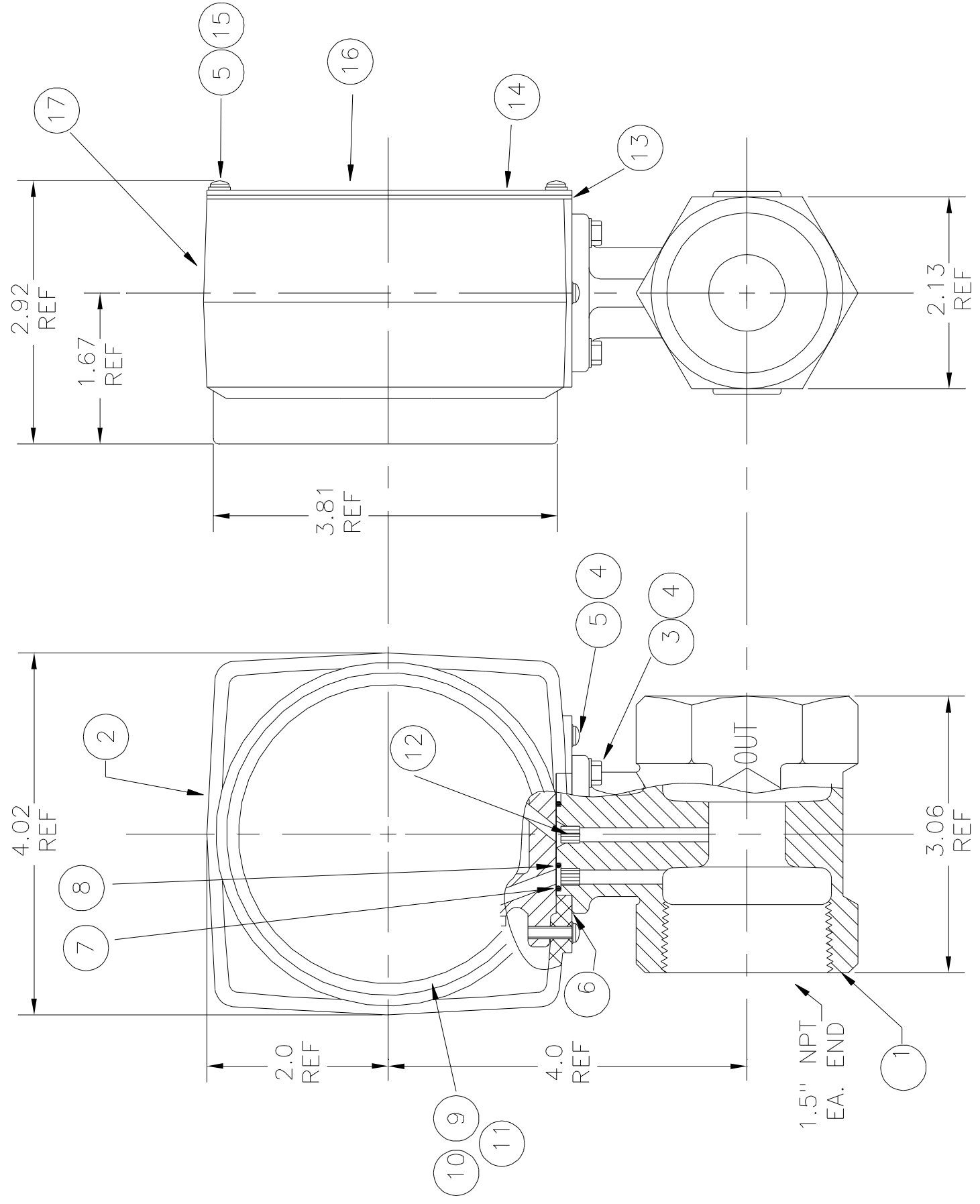


LTR	DATE	BY	CHECK	REVISIONS
A	10/8/03			FOR HISTORY SEE AA2813



ITEM	DWG. NO.	DESCRIPTION OF MATERIALS	QTY.
17	2041	NAMEPLATE LABEL	1
16	6287	CALIBRATION STICKER	1
15	4301	#8 SST LOCK WASHER	4
14	1542	BACK COVER PLATE	1
13	1631	BACK COVER PLATE GASKET	1
12	6307	PULSATION SNUBBER	2
11	4481	SST RETAINER RING	1
10	6168	PLASTIC DIAL CRYSTAL	1
9	2951	DIAL GASKET	1
8	4511	-016 O-RING	1
7	4531	-024 O-RING	1
6	3651	FLANGE GASKET	1
5	6599	8-32x3/8 PAN HD SST	6
4	4251	NYLITE WASHER, #8 NYLON	6
3	4401	8-32x5/8" SST HEX HD SCREW	4
2	5293	ALUMINUM HOUSING	1
1	1883	1 1/2" MONEL BODY	1

UNLESS OTHERWISE SPECIFIED: DIMENSIONS ARE IN INCHES		RCM Industries, Inc. 110 MASON CIRCLE CONCORD, CA. 94520	
TOLERANCES		SERIES 7000 FLOWMETER	
FRACTIONS:	E .03	1.5" MONEL OPT D,F	
X	E .03		
XX	E .03		
.XXX	E		
ANGLES:	E		
SURFACE FINISH:	S		
DRAWN BY	DATE	SCALE	PAGE
	10/08/03	1:1	6849
CHECKED BY		SIZE	REV
		C	A

