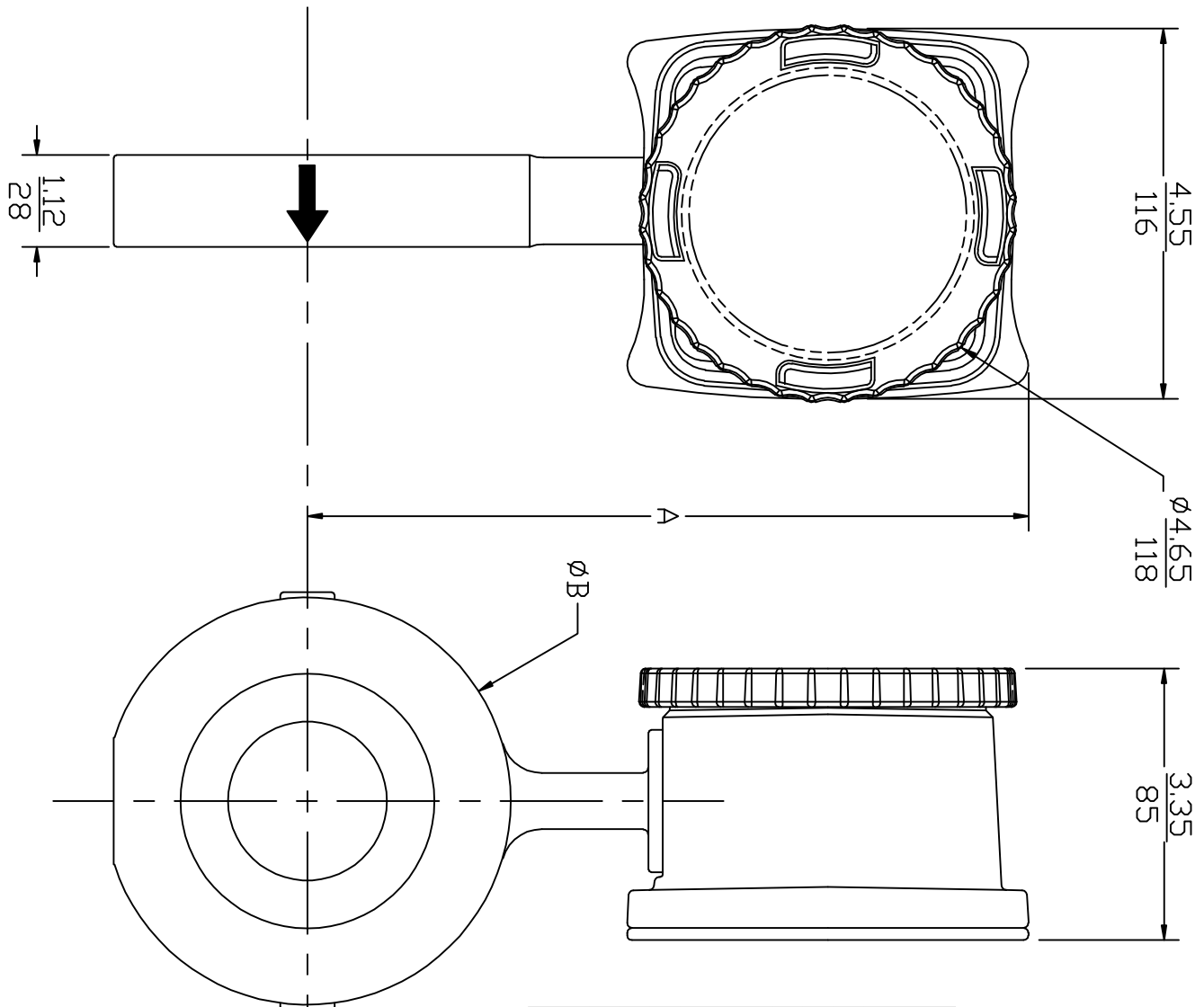


LT#	DATE	BY	CHECK	REVISIONS
A	4/11/00			INITIAL DESIGN
B	8/11/00			ADD SST DIMENSIONS

# SERIES 8000

## DIMENSION

PIPE SIZE	BRONZE & MONEL				SST		
	A		B		B		
in	mm	in	mm	in	mm	mm	
0.5	15	6.62	168	1.69	43	1.62	41
0.75	20	7.06	179	2.00	51	2.00	51
1.0	25	7.25	184	2.38	60	2.38	60
1.5	40	7.81	198	3.12	79	3.00	76
2.0	50	8.00	203	3.75	95	3.75	95
2.5	65	8.54	217	4.25	108	4.25	108
3.0	80	8.87	225	5.00	127	5.00	127
4.0	100	9.95	252	6.13	156	6.00	152
5.0	125	10.36	263	7.38	187	7.00	178
6.0	150	11.05	280	8.38	213	8.00	203
8.0	200	12.30	311	10.38	264	10.00	254



NOTES:  
1. DIMENSION FORMAT IS  $\frac{\text{in}}{\text{mm}}$

ITEM	DWG. NO.	DESCRIPTION OF MATERIALS	QTY.
UNLESS OTHERWISE SPECIFIED: DIMENSIONS ARE IN INCHES TOLERANCES FRACTIONS: ± X ±.005 ANGLES: ± SURFACE FINISH: ±			
DRAWN BY: _____ CHECKED BY: _____		DATE: 8/11/00	
<b>RCM</b> Industrial, Inc. 110 MASON CIRCLE CONCORD, CA. 94520			
SERIES 8000 FLOWMETER HOUSING-BODY ASSEMBLY			
SCALE 1:1		SIZE C	DWG NO. 6390
REV B			