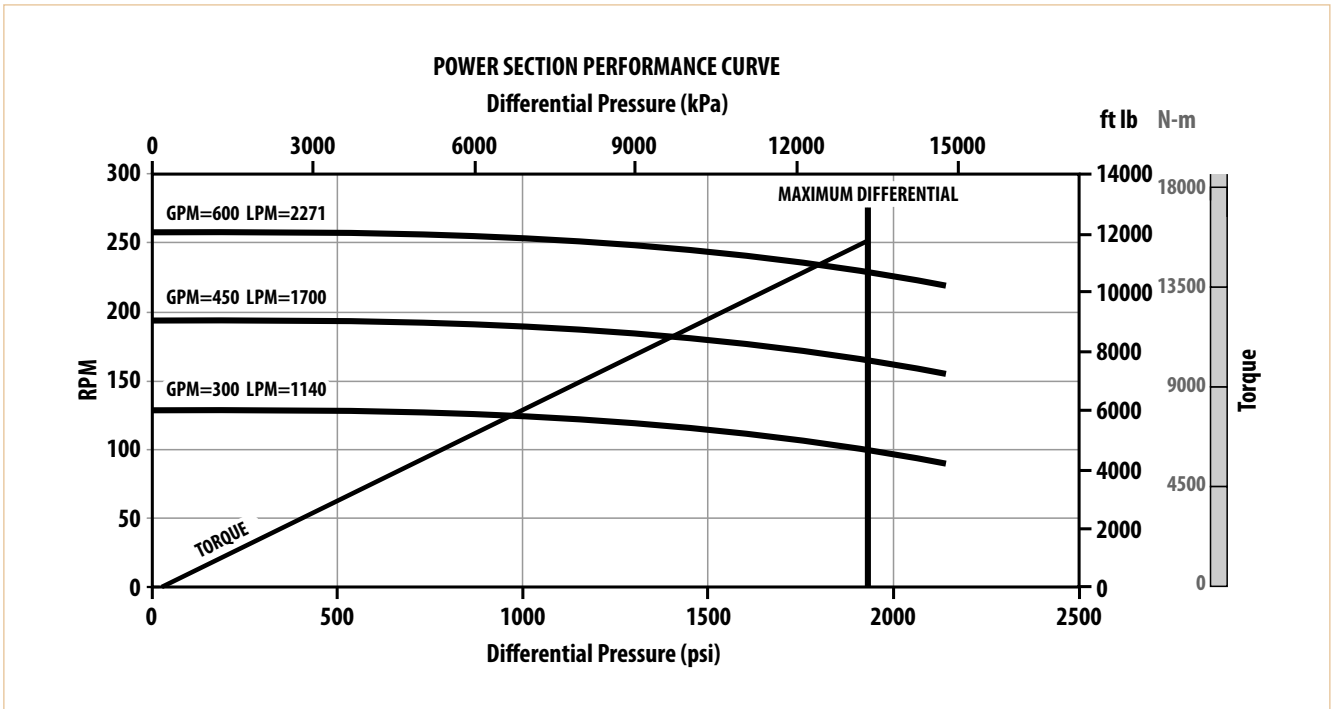
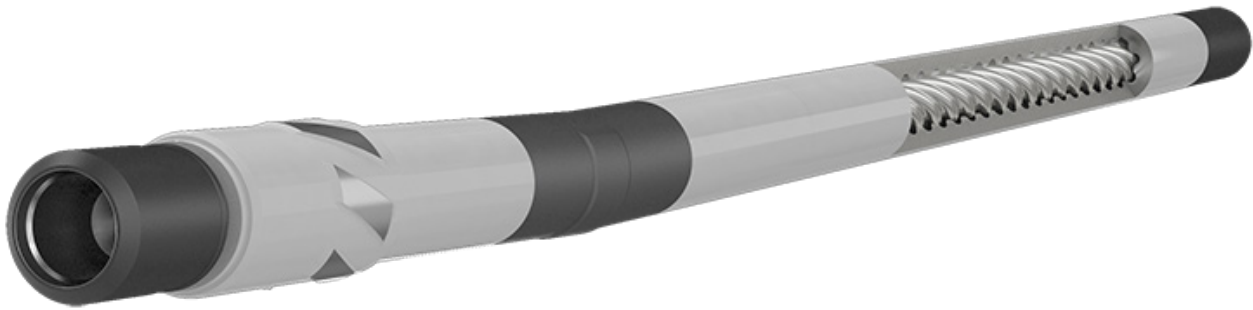


| | Imperial | Metric |
|--------------------|-------------------|-----------------|
| Overall Length | 339.50 in | 8623 mm |
| Bit-to-Bend Length | 77.5 in | 1969 mm |
| Nominal Diameter | 7.15 in | 182 mm |
| Top Connection | 4 1/2 IF BOX | |
| Bottom Connection | 4 1/2 REGULAR BOX | |
| Well Size | 8 1/2 - 10 5/8 in | 216 mm - 270 mm |

| | Imperial | Metric |
|-------------------------------|---------------|-----------------|
| Maximum Weight On Bit | 320000 lbf | 142336 daN |
| Flow Rate | 300 - 600 GPM | 1140 - 2271 LPM |
| No Load Bit Speed | 130 - 260 RPM | |
| Maximum Differential Pressure | 1930 psi | 13308 kPa |
| Full Load Torque | 11760 ft lb | 15944 Nm |
| Power | 580 HP | 433 kW |



Operational specifications are for reference only. Actual tool performance may vary depending a variety of downhole conditions. Performance data is subject to change without notice.

Document no. GEO-MOT-SPEC-0014 rA.0
© Copyright GeoProTech. All Rights Reserved.