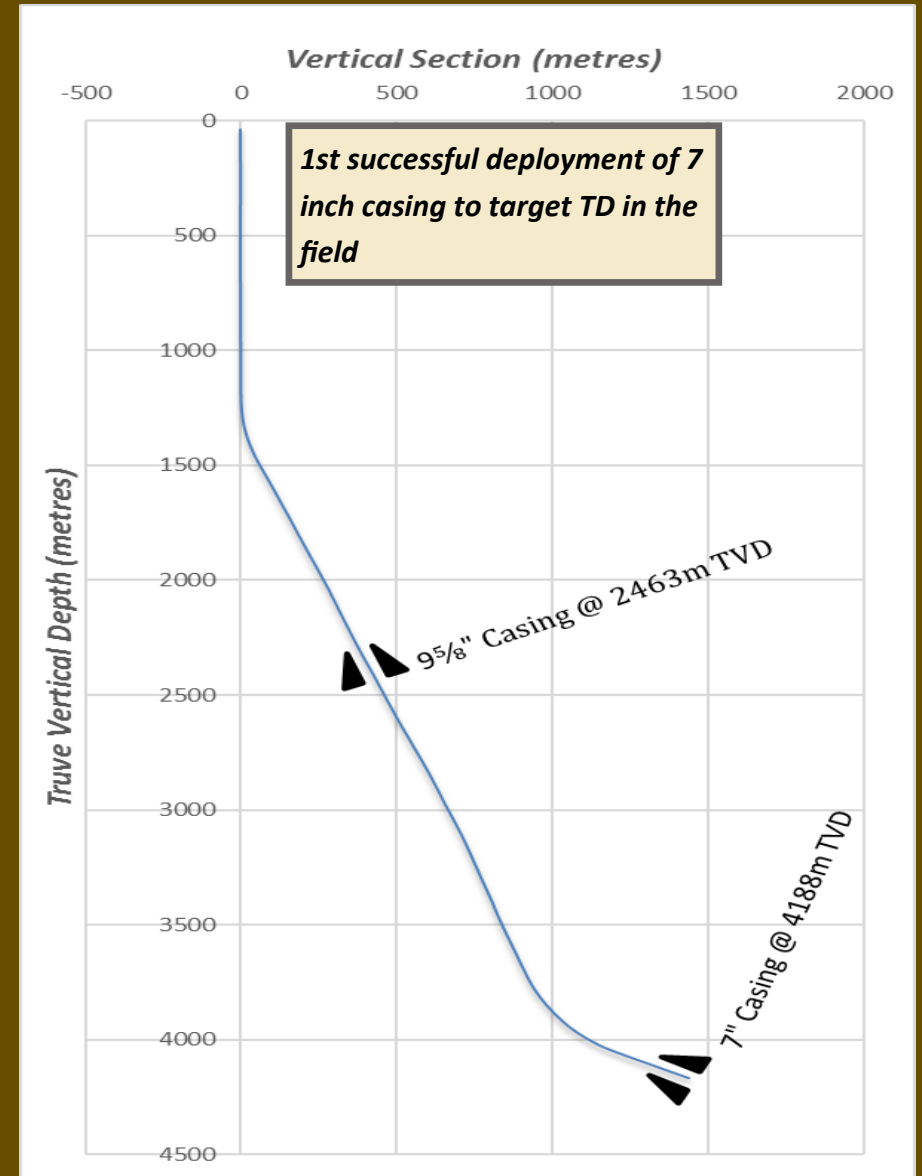
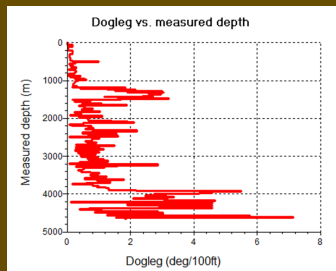


7" GeoGLIDER™ XTREME Deployment in Severe Hole Conditions Saves Customer Days on Well and potentially > \$10 Million in Savings over 12 months

- ⇒ Pulled competitor semi-rigid centralizers and single piece centralizers from hole due to excessive drag and buckling after cutting and retrieving casing.
- ⇒ Second well where casing has been pulled due to excessive drag resulting in broken centralizers.
- ⇒ Geopro designed a centralizer placement program incorporating only 50 GeoGLIDER™ XTREME Lite thermoplastic centralizers with exceptional ultra-low friction factors with exceptional results
- ⇒ Client affirmed the superior solution in no significant drag or issues running casing to TD successfully.



Geopro

WWW.GEOPROTECH.COM

INFO@GEOPROTECH.COM

GGX@GEOPROTECH.COM