

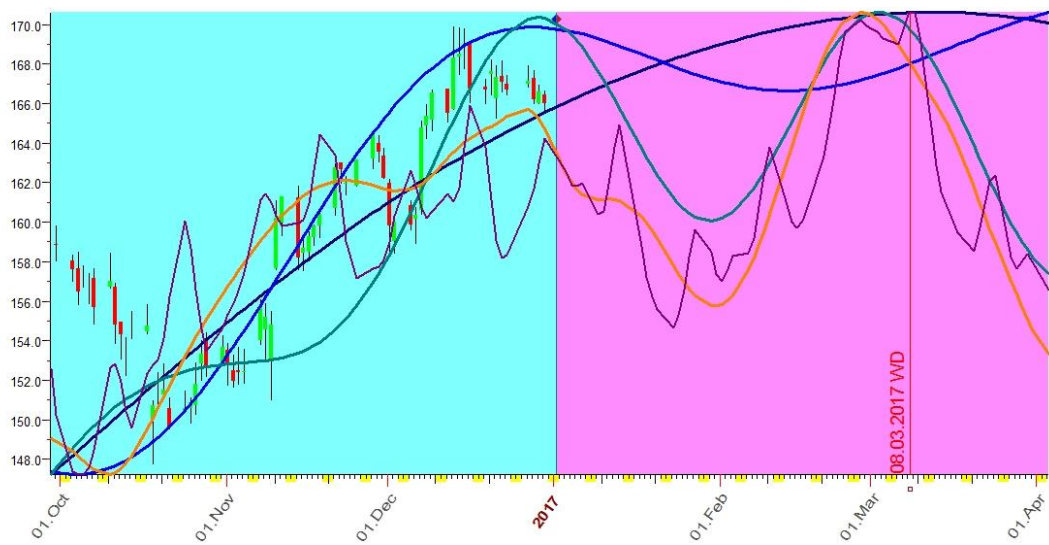
Hello,

Welcome to the world of financial astrology.

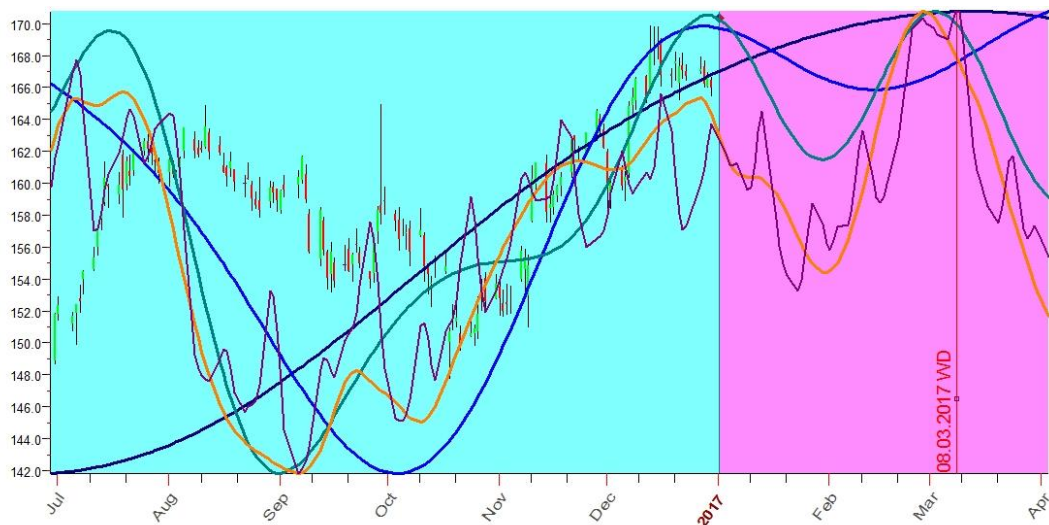
The 5-Layer model presented in www.cycles-trader.com is the result of many years of research in the domain of financial astrology related to the stock market.

Here is the 3-months forecast for the price instrument you ordered:

3-Months forecast picture for **IBM** with 3 months pre-forecast (Example):



3-Months forecast picture for **IBM** with 6 months pre-forecast (Example):



Legend

The 5-Layer model provides price directions probabilities in 5 different resolutions:

--> Yearly model (in Dark Blue) represents the major trend and corresponds to about 250 moving average

--> Quarterly model (in Light Blue), represents a few quarters period trend, over the major trend and corresponds to about 100 moving average

--> Monthly model (in Green), represents a few months period trend, over the major trend and corresponds to about 50 moving average

--> Weekly model (on Orange), represents a few weeks period trend, over the major trend and corresponds to about 20 moving average

--> Daily model (in Velvet), represents a few days period trend, over the major trend and corresponds to about 10 moving average

Note:

The 5-Layer model does not provide exact price values, it provides price directions. Sometimes the projection lines correlate with the exact price level as seen on the picture, but they are actually "floating" over the price values. In a different picture time-resolution the same projection lines may fall on different price levels.

Method

The 5-Layer model uses artificial intelligence to find the effect of thousands of astrology events in the past on the price movements and creates a correlation that can be prolonged to the future.

Price Instruments

The 5-Layer model is agnostic to the price instrument and supports forex, commodities, stocks and indexes.

Accuracy

The most effective way to experience projection lines accuracy is by comparing the results to the forecast visually. Projection lines forecast accuracy depends on the specific price instrument. However, in general, there is a very high correlation between the projection lines created by the 5-Layer model and the actual price movements. Past years visual performance pictures of the 5-Layer model presented for most cases and can easily be generated on demand for others.



Why does it work?

Astrology is known to be a dynamic sensor of feelings when planets are transiting around the natal chart and activating pressure points. On the other hand, buy/sell decisions are based on feelings such as greed, fear, and hope. In Cycles-Trader we analyze the effect of past astrology events on thousands of historic price bars. We are using Neural-Networks mathematics to find the correlation over time. The correlation then continues to the future and generates projection lines based on the predictable astro-events. The algorithm uses artificial intelligence to incorporate additional events effects each time it runs with new data.

Legal

This forecast is for your own private use. You are not allowed to publish it on the internet or share it with other people.

Disclaimer

The projection lines and 5-Layers forecast model provided as education information only, not as trading advice.

This site has been designed for informational and educational purposes only and does not constitute an offer to sell nor a solicitation of an offer to buy any security which may be referenced upon the site. The services and information provided through this site are for personal, non-commercial, educational use and display. www.cycles-trader.com does not provide investment advice through this site and does not represent that the securities or services discussed are suitable for any investor. Investors are advised not to rely on any information contained in the site in the process of making a fully informed investment decision. www.cycles-trader.com does not render tax or legal advice. www.cycles-trader.com does not, and the information found on this site does not make any offer to solicit, deal in, sell or dispose of any security for valuable consideration, and does not make any advisement in the furtherance of an order to buy or sell a security. The use of the site is an agreement that the site is for informational and educational purposes only and does not constitute advice in any form in the furtherance of any trade or trading decisions. The accuracy, completeness and timeliness of the information contained on this site cannot be guaranteed. www.cycles-trader.com does not warranty, guarantee or make any representations, or assume any liability with regard to financial results based on the use of the information in the site. www.cycles-trader.com is not liable for any harm caused by the transmission, through accessing the services or information on this site, of a computer virus, or other computer code or programming device that might be used to access, delete, damage, disable, disrupt or otherwise impede in any manner, the operation of the site or of any user's software, hardware, data or property. Investors are advised to take the services of a competent 'Investment Adviser', before making any investment decision.

The use of this website and information is at your own risk.