



□ STELLA LILIAM

A hearty multi-petaled bloom, this sun-loving flower is a common sight throughout the Valley of Mo'ara. Ethnobotanists from Earth have found that this lovely flower (amongst other similar flora) is commonly used by Na'vi to create necklaces, rings and other personal ornaments.



□ STINGBAT

Treated almost like pets by some Na'vi despite their lethal tail spines, they can be summoned by Na'vi with clicking sounds made between tongue and teeth. Stingbats can be seen nesting in caves or in the crevasses of Pandora's famed floating mountains.



□ STURMBEEST

The sturmbeest is one of the main sources of animal products for the Na'vi. They are extremely social and highly protective of their young. They are also territorial and will mass for attack against any would-be predator.



□ TETRAPTERON

The tetraperton is a class of flamingo-like bird that look almost Terran-like until one notices their four wings (two on either side). The birds also feature a unique twin tail used for balancing their body weight as they hunt or land.



□ THANATOR

Xenobiologists currently believe that the thanator may be the apex land predator on Pandora. Reminiscent of a Terran panther, this enormous, powerful animal is unique in its ability to lord over its territory and strike fear into the largest and fiercest of Pandora's creatures.



□ UNIDELTA

The unidelta, an understory tree with large triangular leaves, has wood that is harvested by the Na'vi to make canoes. The thick waxy leaf cuticle is melted down and used for additional waterproofing. The leaves themselves, which contain no toxic elements, are also used to make bowls since they are naturally waterproofed.



□ VEIN POD

The vein pod is also considered another keystone species on Pandora for their important role in maintaining stability of the environment. The pods themselves act as sponges, absorbing methane from the atmosphere.



□ VIPERWOLF

With six legs and a lean, powerful torso, the viperwolf has evolved to travel swiftly over long distances in search of prey. Very few predators will attempt an attack on a viperwolf, which nearly always moves in a pack that can mass into a highly cooperative hunting party within seconds.



□ WARBONNET

Used by Na'vi for ceremonial purposes, including creating headdresses and other adornments, the leaves with bioluminescent lines and arrowlike patterns are also used for directional markers and navigation.



□ WOODSPRITE

Woodsprites are an alien amalgam of plants and animals. They are the seeds of the Na'vi Tree of Voices – the Utral Aymokriyā – and the angels of Eywa. They are sacred to the Na'vi and are often seen as the bearers of omens and signs.

KEEP YOURSELF AND MO'ARA SAFE!

While you enjoy your exploration of Mo'ara, please help us put safety first for both you and Mo'ara by following the guidelines below:

- Do not feed the animals
- Do not attempt to approach or cross any barriers designed for guest and animal safety
- Do not attempt to harm the animals or their habitats



FMAL TIKXUKET NGEYÄ SÌ MO'ARAYÄ

Tengkr lerang Mo'arat ni'o' ni'aw, rutxe ayoeru srung si fte tsivun ayoe fmival tikxuket ngeyä si Mo'arayä fa fwa lek faysänumet:

- Rää yomtiving ayioangur
- Rää fmivi livok fu emkivä ayekxanit a fkol ngolop fpi sikkuke ayfrrtuä si ayioangä
- Rää fmivi kxu sivi ayioangur fu helkur feyä

YOUR ADVENTURE CAN CONTINUE EVEN AFTER YOU RETURN TO EARTH!

We hope the inspiring Pandoran wildlife and flora in our valley will capture the curiosity and appreciation of all who view it. When you go home, be sure to care for nature in your own backyard or neighborhood. Learn more about your favorite animals or plants and what you can do to help them in the wild.



The Pandora Conservation Initiative encourages you to support the Disney Conservation Fund's efforts to protect nature for children around the world. Since 1995, the fund has awarded more than \$65 million to projects working to reverse the decline of wildlife and increase the time kids spend in nature. Learn more about this program by visiting our Cast Members on Earth or www.disney.com/conservation.



JPL 07231960

© Twentieth Century Fox Film Corporation

PANDORA

THE WORLD OF AVATAR



GUIDE TO THE FLORA & FAUNA OF THE VALLEY OF MO'ARA



THANKS TO OUR PARTNERSHIP WITH THE INDIGENOUS NA'VI PEOPLE,
ALPHA CENTAURI EXPEDITIONS WELCOMES YOU TO
PANDORA – THE WORLD OF AVATAR,
A WORLD SIMILAR TO EARTH BUT UNIQUE IN SO MANY WAYS.

WE ENCOURAGE YOU TO EXPLORE AND DISCOVER!



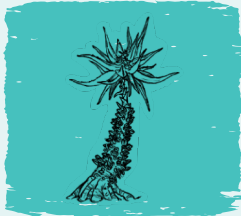
❑ BANSHEE

The Na'vi call them ikran, we call these beautifully hued aerial predators banshee. As part of the coming of age Iknimaya ceremony, all young Na'vi must bond with a wild banshee to prove their strength and fortitude.



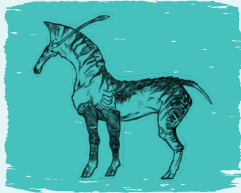
❑ BLADDER POLYP

The bladder polyp is a simple plant with succulent leaves that grows in a mound directly on the ground. The larger teal-colored leaves store water in their tissues and are very attractive to animals as food. These polyps are found in abundance throughout Mo'ara.



❑ DAPOPHET

This multi-use plant is a staple of Na'vi life. The leaves at the top have medicinal and healing properties. Na'vi harvest its succulent leaves to carry and eat for hydration and the viscous sap is also a powerful insect repellent. Dapophets in Mo'ara appear to favor the banks of waterways.



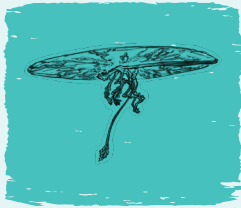
❑ DIREHORSE

The Na'vi equivalent of the terran horse, the direhorse is used by Na'vi clans across all of Pandora. The direhorse is a swift, nimble mount that is well adapted to the rugged Pandoran terrain.



❑ EPISOTH

The episoth is a tree that spreads its seeds near and far. Its large spiny fruits grow from flowers all along the branches. When they are ripe they open explosively, flinging seeds in all directions. Researchers have only found 4 specimens scattered around Mo'ara. Can you find them all?



❑ FAN LIZARD

At first glance, this unique lizard appears to be little more than a dull, ruler-length reptile with few apparent virtues. When agitated, however, it unfurls like an antique Chinese fan and spins away to safety. Fan lizards can sometimes be spotted jumping from one jungle canopy leaf to another.



❑ FLASKA RECLINATA

A large plant with an inclined, flask-shaped body. A cluster of stiff spiny leaves protects a small opening at the top. Atmospheric toxins are absorbed by the plant and dissolve into liquid that accumulates inside. When agitated, this primeval "soup" will build pressure before ultimately releasing a plume from the top of the plant.



❑ GOBLIN THISTLE

The passiflora topped goblin tree grows in a hunched shape and is supported by propped roots. During the bioluminescence of the evening, the stooped appearance of the thistle is more pronounced. There are at least 12 goblin thistles in Mo'ara. How many can you find?



❑ GREAT LEONOPTERYX

The largest known aerial apex predator on Pandora, this creature is known in Na'vi as Toruk. The Na'vi name derives from the belief that if the leonopteryx casts its shadow, it will be the last shadow you will ever see.



❑ HAMMERHEAD TITANOTHERE

Nearly twice the size of an African elephant but much faster, this massive, grazing creature travels in small herds or packs. Titanotheres possess a series of brightly colored skin flaps with rigid, chitinous backings that can be raised when confronted by an adversary.



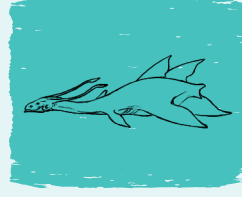
❑ HELICORADIAN

This interesting specimen is a plant/animal hybrid with an animal-like nervous system. It consists of a single orange leaf that responds to touch by coiling up and retracting rapidly into the ground. In Mo'ara these beautiful zooplantae can only be found on the banks of the Kapsavan River.



❑ HEXAPEPE

One of the most beautiful and agile creatures on Pandora, the hexapepe is a prime target for any land or aerial predator. These shy creatures sometimes can be found hiding in a field of helicoradian.



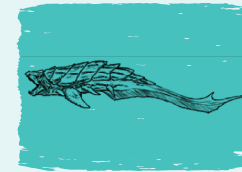
❑ ILU

The ilu is a large plesiosaur-like sea creature that is the direhorse of the Pandoran ocean. With multiple fins/flip-pers and a long, streamlined shape, this aquatic pack animal serves the reef Na'vi clans like direhorses serve the Na'vi clans of the forests, jungles and plains.



❑ INRIGO LILIAM

This lovely, freshwater flower has such an alluring scent and such a colorful array of petals that it's a natural attractant for small river fauna. The Na'vi often string their woven nets underneath the flower in shallow waters to easily snare small fish.



❑ NALUTSA

A cousin of the more elusive and fierce akula, this six-gilled ocean behemoth can be seen leaping out of the near-shore waters. Birthing and parenting behaviors are not dissimilar to those of orca whales on Earth.



❑ PANOPYRA

The panopyra, nicknamed "love flower" by Terran scientists, is an unusual life form that has characteristics reminiscent of a jellyfish, and also has, like the helicoradian, a primitive nervous system. The Na'vi collect the liquid in the body and use it for a nutritious and healing drink. How many can you find hanging above the Kapsavan River?



❑ PROLEMURIS

This chattering, non-aggressive tree dweller prefers the relative safety of the canopy to the dangers of the rainforest floor. Resembling a Terran primate, this creature has an interesting evolutionary adaptation in that it has two arms that split into four forearms; increasing their mobility to navigate through the trees.



❑ PUFFBALL TREE

The puffball tree is considered a keystone species on Pandora. It plays a critically important role in maintaining stability of the environment. Its globular balls act as sponges, absorbing toxic gas from the atmosphere. How many of this cornerstone flora can you find in Mo'ara?



❑ SAGITTARIA

A predator, this cephalopod-type creature has a hard exterior which is exposed to the air. Long tentacles float calmly in the water. The means of hunting prey, which mostly consists of small flying creatures, is highly specialized and unique.



❑ SHIMMYFLY

An iridescent and glimmering Pandoran version of the Terran Lepidoptera (butterfly), this delicate creature gracefully flies through the Mo'ara valley on multiple glowing, almost crystalline wings.



❑ SPINY WHIP

Spiny whips are unusual plants that consist of a stem that has a conical base and a cup-shaped top, which usually contains rainwater that has collected following a storm. To date, researchers have found 19 of them in Mo'ara. How many can you find?