

DEEPEYE VIDEO LAPAROSCOPE SYSTEM



Catch What You've Missed

DeepEye Video Laparoscope System provides world-leading Fog-proof Capability and unparalleled operation convenience with integrated lighting system.

DeepEye Video Laparoscope System—Processor



Specification of DeepEye—Processor

Items	Specification
Resolution	1920X1080 HD
Input electrical ratings	700VAC, 50/60Hz
Video output port	2X DisplayPort, 1X HDMI, 2X DVI-D
Control port	2X USB for keyboard and mouse, 1X Ethernet
Indicator	Indicates power and camera connecting status
Video export port	Export record video from Processor to U disk

DeepEye Video Laparoscope System—Laparoscope

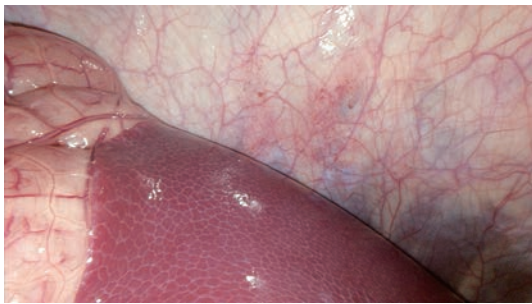
- **Outside Diameter: 10mm**
- **FULL HD (1920 ×1080p)**
- **Direction of view: 0° & 30°**
- **Internal Light Source**
- **Fog-proof Function**
- **Chip-On-The-Tip**
- **Recording & Broadcasting Capabilities**
- **Integrated Video Recording**
- **Autoclavable**



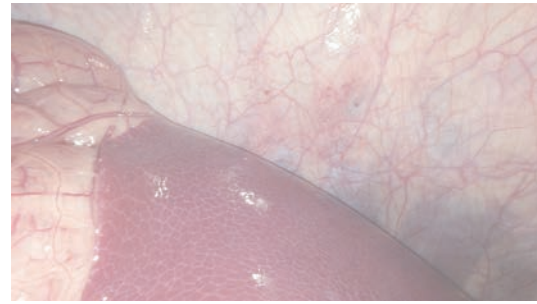
Specification of DeepEye —Laparoscope

Items	LPS21000	LPS21030
Maximum insertion portion width	10mm	10mm
Working length	345.5mm	348.2mm
Direction of view	0°	30°
Field angle	91°(Diagonal)	85°(Diagonal)
Angular Resolution at center of field	5 cycle/°	5 cycle/°
Depth of field	20mm-120mm	20mm-120mm
Cleaning/Disinfection	Immersible in disinfectant solution	Immersible in disinfectant solution
Sterilization	Moist Heat	Moist Heat

Unmatched Fog-proof Function

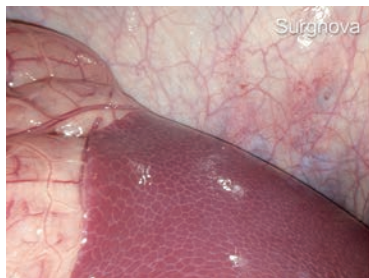


Ultraclear view with DeepEye Fog-proof Function

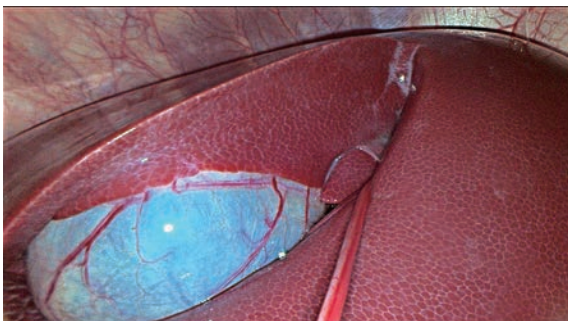


Conventional Laparoscope

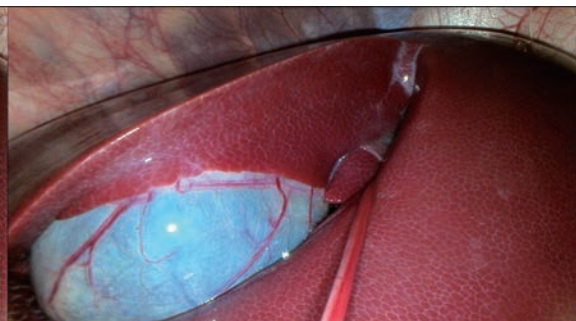
Much More Information, Much Clearer View



Unique Image Enhancement Algorithm



The image taken with Surgnova unique image enhancement algorithm



Original Image

Order Information

Model	Description
EVS100	Processor of DeepEye Laparoscope Video System

Model	Description	Size
LPS21000	0° Laparoscope of DeepEye Laparoscope Video System	Diameter 10mm; Working Length 34.6cm
LPS21030	30° Laparoscope of DeepEye Laparoscope Video System	Diameter 10mm; Working Length 34.8cm

SURGNOVA

First Choice for Surgeons and Patients

Surgnova Healthcare Technologies (Beijing) Co., Ltd.

Address: 5F. Yashi Blvd, No.22, Hongjunying Rd., Chaoyang Dist, Beijing, China

Tel: +86 10-6411-8265

Fax: +86 10-6411-3261

Surgnova Healthcare Technologies (Zhejiang) Co., Ltd.

Address: No1 Xinxing One Rd., Hi-Tech Industrial Development Zone, Cixi City, China

Tel: +86 574-6320-1210

Fax: +86 574-6320-1210

E-mail: mkt@surgnova.com

Web: www.surgnova.com

Stay Connected



Surgnova on WeChat



Surgnova on LinkedIn
Surgnova Healthcare Technologies